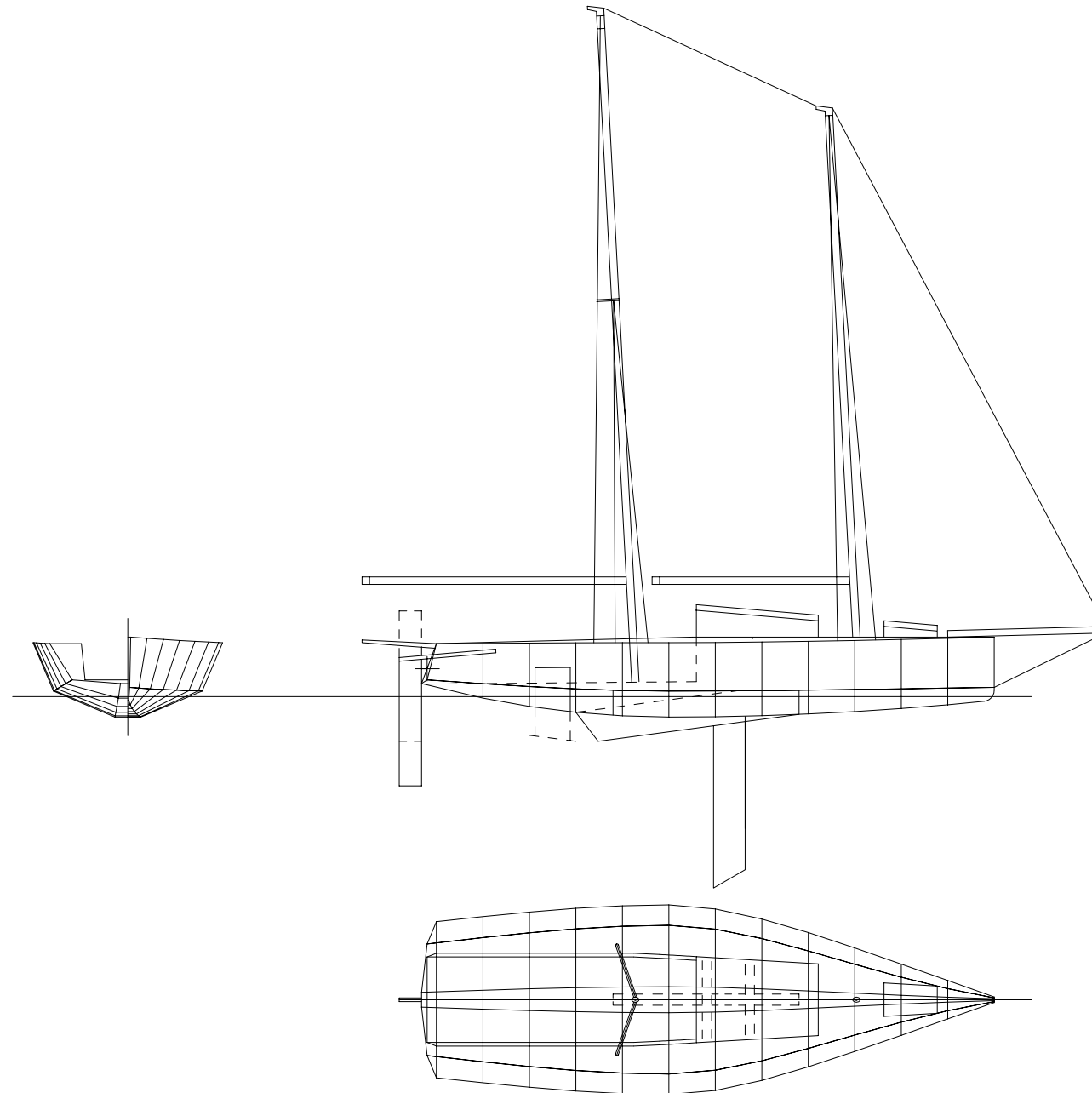


SPECIFICATIONS:

2500# DSPL
 1000# BALLAST
 DRAFT 6'-3", 2' UP
 25'-6" LOA
 20'-6" LWL
 8'-6" MAX BEAM
 6'-6" WL BEAM
 P: xx'-x"
 E: x'-x"
 I: xx'-x"
 J: x'-x"
 BSL: xx'-x"
 MAST HEIGHT ABOVE WL 25'-0"

REVISIONS			
REV	DESCRIPTION	DATE	APPROVED



ROSSI ENGINEERING 45224 BUGGS WAY TALL TIMBERS, MD 20690 USA PH: 301-994-3021 FAX: 301-994-3046		ROSSI - SCHOONER CLASSIC 25		
		SPECIFICATION		
	SIZE C	DWG NO. TBD		REV
COPYRIGHT 2006	SCALE N/A		SHEET 1 OF 1	